



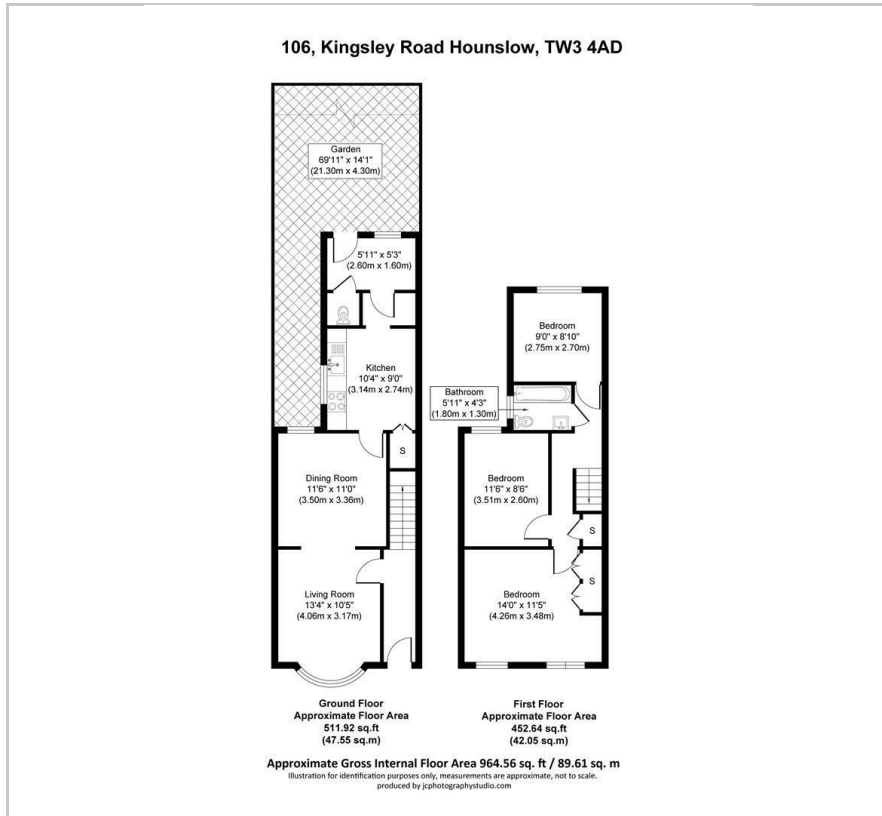
MOVE INN ESTATES
MAKING THE RIGHT MOVE



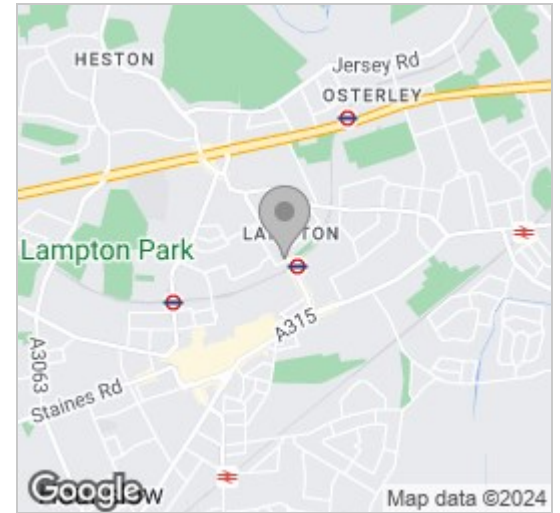
Kingsley Road
Hounslow, TW3 4AD
Offers Over £475,000



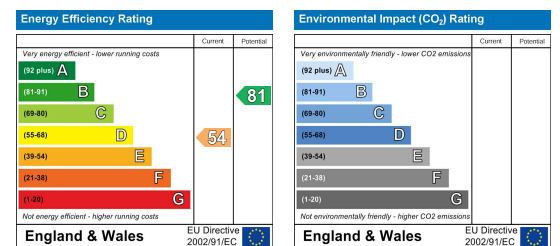
Floor Plan



Area Map



Energy Efficiency Graph



Viewing

Please contact our Move Inn Estates - Sales Office on 0208 574 4966 if you wish to arrange a viewing appointment for this property or require further information.

- Three Bedroom Family ■ Mid Terraced Home
- Ideal for First Time Buyer/ ■ Scope To Extend (STPP) Investors
- Excellent Transport Links ■ Viewings Highly Recommended



Move Inn Estates presents this fantastic 3-bedroom home, ideally located on Kingsley Road, just a stone's throw away from Hounslow East Station. With its unbeatable location and immense potential, this property offers a rare opportunity for those seeking a project to transform into their dream home.

Situated in the heart of Hounslow this residence boasts excellent connectivity, making it an ideal choice for commuters and those who value easy access to amenities. The proximity to Hounslow East Station ensures effortless travel to central London and beyond, while the vibrant local shops, restaurants, and entertainment options are all within reach.

Upon entering the property, you'll be greeted by a spacious living area, filled with natural light that enhances the sense of space and openness. The potential for transformation is evident, with the property eagerly awaiting your personal touch and creative vision.

The kitchen, though in need of modernization, provides the opportunity to craft a culinary haven that suits your needs perfectly.

Upstairs, three well-proportioned bedrooms offer comfortable accommodation for the whole family or visiting guests. With a touch of modernization, these rooms can be transformed into peaceful sanctuaries.

Don't miss out on this exceptional opportunity to secure a property with tremendous potential in a prime location. Whether you're an astute investor or an aspiring homeowner, this property on Kingsley Road is a blank canvas ready to be transformed into a remarkable living space tailored to your taste and style. Act now and seize the chance to create your dream home in one of Hounslow's most coveted areas.



These particulars, whilst believed to be accurate are set out as a general outline only for guidance and do not constitute any part of an offer or contract. Intending purchasers should not rely on them as statements of representation of fact, but must satisfy themselves by inspection or otherwise as to their accuracy. No person in this firm's employment has the authority to make or give any representation or warranty in respect of the property.

46 Vicarage Farm Road, Hounslow, Middlesex, TW5 0AB

Tel: 0208 574 4966 Email: info@moveinnestates.co.uk www.moveinnestates.co.uk